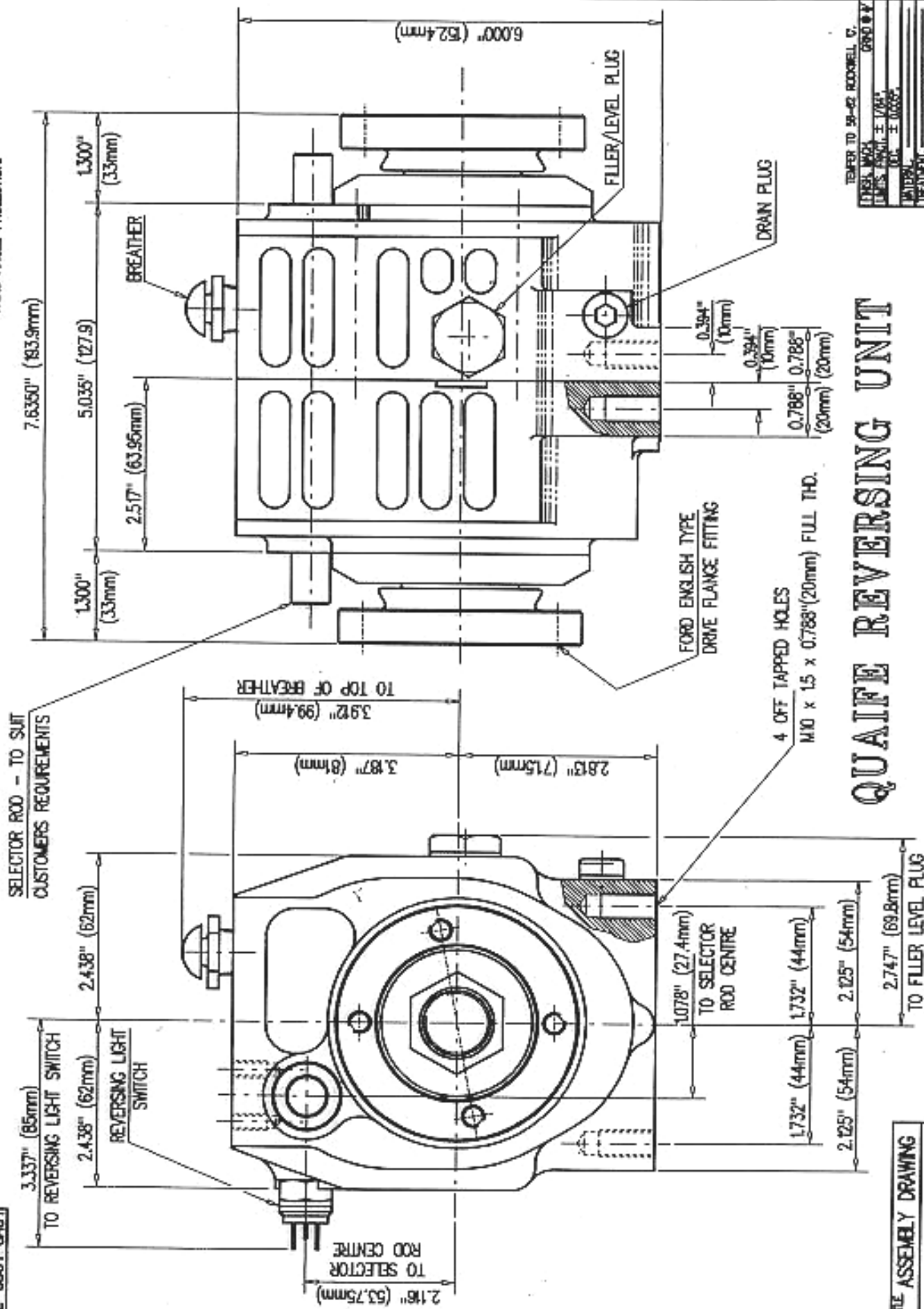


REMOVE ALL BURRS AND SHARP EDGES.

THIRD ANGLE PROJECTION



TELETYPE TO 58-42 ROCKWELL C.

[illegible]

UNITED STATES	DATE: 5/20/00
DEPARTMENT OF JUSTICE	FILE NO. 100-443887
FEDERAL BUREAU OF INVESTIGATION	BY: J.B. CHECKED BY:
WASHINGTON, D.C. 20535	

F IN DOUBT, ASK

Used In. CLAFE REVERSING UNIT.

Qualite Design & Development

Dr. No. E-35G1-GA01

U.S. Patent for

QUAIFE REVERSING UNIT

TITLE ASSEMBLY DRAWING